



**PRODUCT
CATALOG
2025**



Automatic – Built by Shooters, for Shooters

Automatic is a Ukrainian brand that designs and manufactures firearm accessories with precision and purpose. Since 2018, the company has focused on producing chassis systems for bolt-action rifles – trusted by professionals and enthusiasts alike.

Crafted from ultra-durable 7075-T6 aluminum and finished with military-grade hard anodizing, Automatic chassis allow you to transform a standard rifle into a high-performance precision weapon – in just minutes. These systems offer improved resistance to thermal and mechanical stress, while maintaining a perfect balance of strength, lightweight construction, and ergonomic design to support maximum accuracy.

Automatic currently offers third-generation chassis systems for some of the most popular platforms on the market, including Remington 700, Savage 110, Tikka T3x, and Howa 1500. One of the brand’s standout achievements is the development of a specialized chassis for .375 CheyTac rifles, built specifically for the “Righteous Fury” project at the request of the Come Back Alive foundation.

But Automatic goes far beyond chassis. The team – made up primarily of experienced shooters – also develops premium firearm accessories such as cheek risers, bag riders, mounts, rails, adapters, and more. Their growing catalog also includes pistol upgrades that improve comfort, control, and shooting precision.

With full in-house production and the integration of cutting-edge technologies, Automatic delivers gear that meets the highest standards of performance and reliability.

Automatic is the choice of those who demand precision – and trust what they shoot.



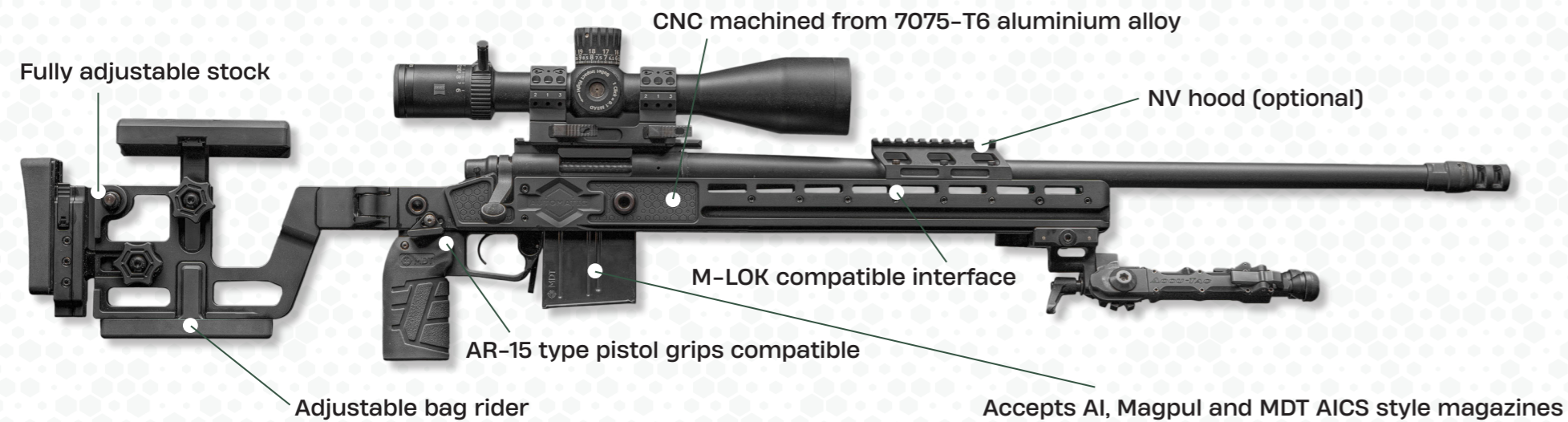
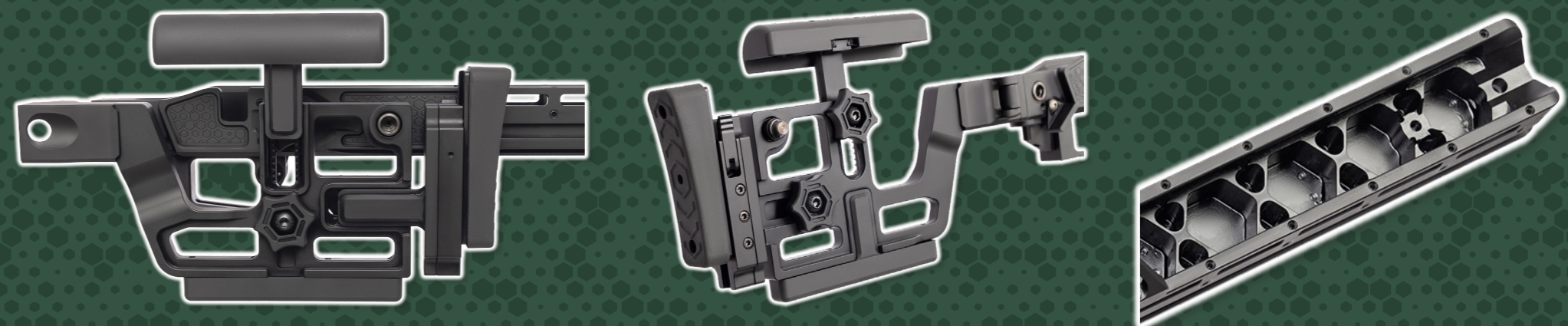
Contents

| | |
|-----------------------|----|
| CHASSIS GEN 3.1 | 6 |
| CHASSIS GEN 3.0 | 10 |
| CHASSIS GEN 2.3 | 14 |
| ACCESSORIES | 18 |



Automatic ARC3.1 is an upgraded version of the ARC3.0 chassis. It features an adjustable bag rider while retaining all the advantages of the previous generation.

Automatic ARC3.1



CNC machined from 7075-T6 aluminium alloy

Fully adjustable stock

NV hood (optional)

M-LOK compatible interface

AR-15 type pistol grips compatible

Adjustable bag rider

Accepts AI, Magpul and MDT AICS style magazines

Remington

700

CADDEX
DEFENCE

CDX-40

STILLER

sako
FINLAND

TRG 22

SAVAGE

110

TIKKA

T3x

SR

SURGEON RIFLES

WEATHERBY

MARK V



chassis Gen 3.0

The new generation of the Automatic ARC3.0 chassis brings the design even closer to perfection, incorporating previous developments along with new engineering solutions. The ARC3.0 chassis offers a range of advantages for building a high-precision shooting platform, including:

- Rigid one-piece all-metal construction milled from 7075-T6 aluminum alloy with anodized finish
- Folding stock
- Adjustable stock components
- Magpul M-LOK interface
- Thumb rest for improved trigger control and a more relaxed grip, ensuring no unnecessary tension in the firing hand
- Multiple QD sling mount bases for accessory attachment
- Simple and reliable stock folding mechanism: in the folded position, the stock locks into the QD sling base; to unfold, no button press is required – just pull the stock outward
- Tool-free adjustment of stock length and cheekpiece height
- Cheekpiece made of low-thermal-capacity Delrin; soft buttpad offers adjustable height and rotation angle relative to the stock axis
- Adjustable magazine catch height in the magazine well, allowing compatibility with magazines from various manufacturers

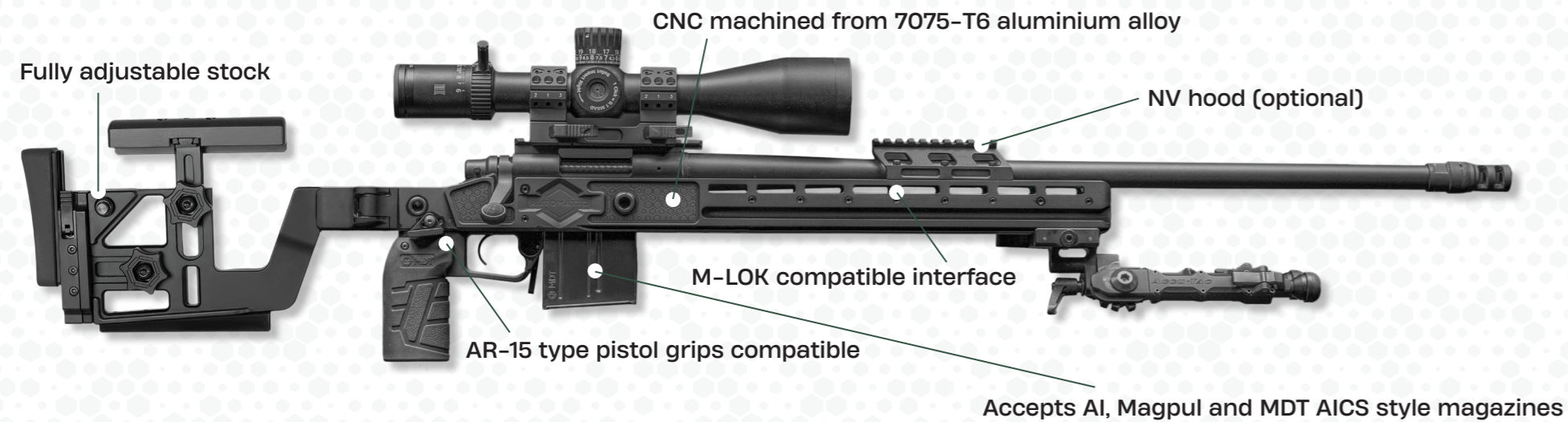
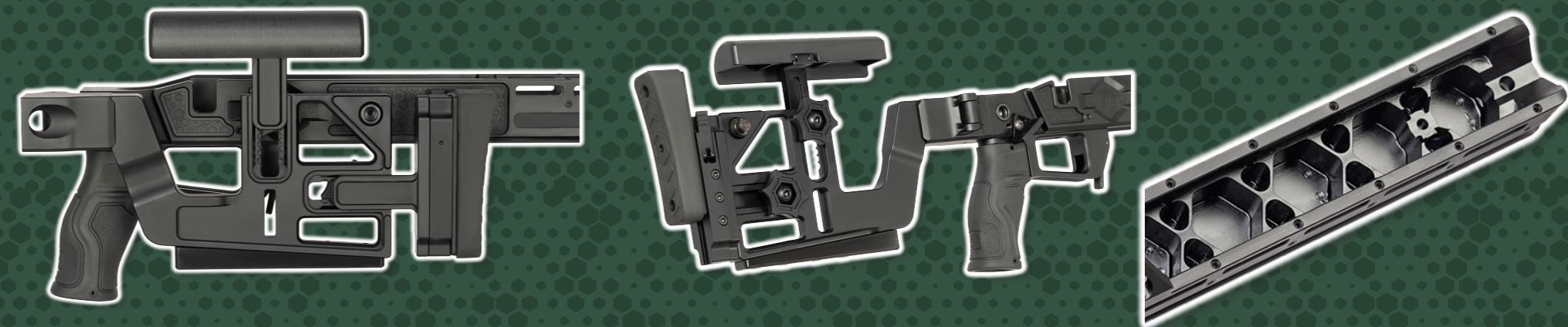
Compared to the previous generation, the Automatic ARC3.0 features several important upgrades:

- Extended handguard reinforced with a honeycomb structure, allowing additional components to be mounted
- Integrated ARCA Rail and Anschutz Rail interfaces
- Integrated bag rider at the bottom of the stock
- Optional accessories for the Automatic ARC3.0 chassis include:

ARCA-to-Picatinny bipod adapter

- QD sling mount bipod adapter for ARCA Rail
- Trident Gun Plate ARCA bag shooting base
- NV Bridge 3.0 – mount for front-mounted night vision devices.

Automatic ARC3.0



Remington

700

CADEX
DEFENCE

CDX-40

STILLER

sako
FINLAND

TRG 22

SAVAGE

110

TIKKA

T3x

SR

SURGEON RIFLES

WEATHERBY

MARK V



Chassis Gen 2.3

The Automatic ARC2.3 chassis has come even closer to perfection, incorporating previous developments along with new solutions. The Automatic ARC2.3 chassis offers several advantages for building a precision shooting system, including:

- A rigid, solid-metal construction milled from 7075-T6 aluminum alloy with hard anodizing coating.
- A folding stock mechanism.
- Fully adjustable stock.
- Magpul M-LOK compatible interface.
- The option to install ARCA Rail.
- Picatinny interface on the lower part of the stock.

Compared to the previous generation, the Automatic ARC2.3 introduces several important improvements:

- A thumb rest has been added, ensuring a cleaner shot by reducing tension in all fingers except the trigger finger, improving shot control.
- Several QD sling mount bases have been added for accessory attachment.
- The stock folding mechanism has been redesigned for increased reliability and simplicity. In the folded position, the stock now locks into a QD sling mount base. To deploy the stock, there is no need to press and hold a special button – this action can be performed simply by pulling the stock into the open position.
- The height adjustment screws for the cheek rest and butt pad have been redesigned to prevent them from being lost when loosened.
- Tool-free length-of-pull and cheek rest height adjustment. The cheek rest is made of Delrin, while the soft butt pad features both adjustable height and a rotatable angle relative to the stock axis.
- The ability to fine-tune magazine fitment for different manufacturers by adjusting the retention spring.

Additional accessories for the Automatic ARC2.3 chassis may include:

- A long Automatic ARCA Rail for mounting bipods, tripods, barricade stops, or a shooting bag platform.
- A bipod mount adapter for ARCA Rail with Picatinny interface.
- A sling swivel for mounting bipods on the ARCA Rail.
- An ARCA-based Trident Gun Plate for shooting from bags.
- An NV Hood for front-mounted optical accessories.
- A Bag Rider attachment for the lower part of the stock, designed for shooting from benchrest bags.



Automatic ARC2.3



CNC machined from 7075-T6 aluminium alloy

Fully adjustable stock

NV hood (optional)



Proprietary interface for Automatic ARCA Rail and other accessories

AR-15 type pistol grips compatible

Accepts AI, Magpul and MDT AICS style magazines

Remington

700

WEATHERBY

Vanguard Short Track

Howa
Precision Rifles & Barreled Actions

1500 Short Action

CHRISTENSEN ARMS

MLR

BERGARN

B-14

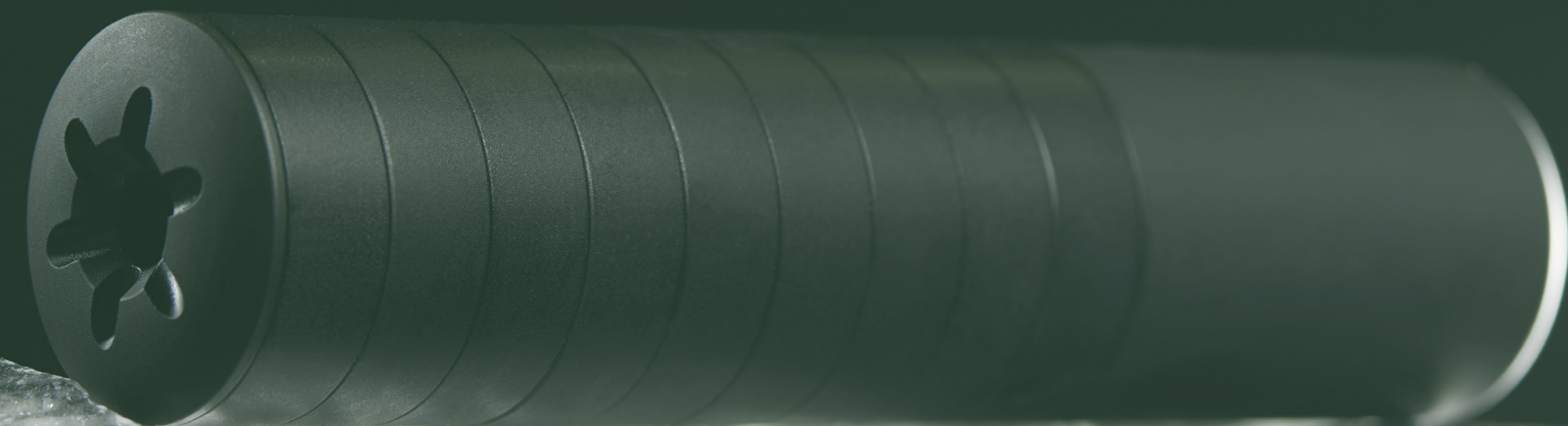
SAVAGE

110

TIKKA

T3

Accessories



Automatic ARCA Clamp + M-LOK Bipod Mount Combo (Fits Harris Bipods)

The two-piece set consisting of the Automatic ARCA Clamp and the Automatic M-Lok Bipod Mount is designed for quickly mounting Harris-style bipods to ARCA Swiss interfaces. The Automatic ARCA Clamp enables fast attachment, repositioning, and removal of accessories on ARCA Swiss-style interface rails. The cam-lock lever allows convenient one-handed operation, while clamping tension can be adjusted via a screw located opposite the lever.



Thanks to its M-Lok interface, the clamp can be used to mount a Trident Plate, Picatinny/Weaver rail section, or a Harris-style bipod adapter. The adapter's geometry is engineered to ensure maximum stability and secure bipod fit. The set includes all necessary mounting hardware (screws and nuts), along with an integrated sling swivel stud for bipod installation.

| | |
|------------------------|-------------------|
| Code | 570044 |
| Index | 46947 |
| Material | Aluminum alloy |
| Seat | Sling swivel base |
| Mounting base | ARCA Swiss |
| Additional Information | Anodized surface |

Automatic ARCA Clamp + M-LOK 1913 Picatinny Rail 5-Slot Combo

The Automatic ARCA Clamp + M-Lok 1913 Picatinny Rail Combo consists of two components: the quick-detach Automatic ARCA Clamp and the Automatic M-Lok 1913 Picatinny Rail, designed for rapid mounting of bipods and other accessories to ARCA Swiss interfaces. The Automatic ARCA Clamp enables fast installation, repositioning, and removal of accessories on ARCA Swiss-style rails. The cam-lock lever allows for convenient one-handed operation, while



clamping tension is adjustable via a screw on the opposite side of the lever. Thanks to its integrated M-Lok interface, the clamp can also accommodate a Trident Plate, a Harris bipod adapter, or other M-Lok-compatible accessories. The rail can also be attached to any M-Lok-compatible component, such as a rifle handguard or the Automatic ARCA Clamp.

| | |
|------------------------|-------------------|
| Code | 570045 |
| Index | 46834 |
| Material | Aluminum alloy |
| Seat | Picatinny, Weaver |
| Mounting base | ARCA Swiss |
| Additional Information | Anodized surface |

Automatic ARCA Trident Plate Gen 2 + ARCA Clamp Combo B1

The ARCA Trident Plate Gen2 is an accessory designed for mounting to an ARCA Swiss rail installed on a rifle stock. This platform provides significantly increased stability when resting the rifle on bags or other surfaces – an advantage particularly appreciated by PRS shooters.

Features:

- Symmetrical design: can be mounted facing forward or backward
- Cam-lock system: enables quick and easy one-handed adjustment along the rail
- User-configurable latch: can be positioned for right- or left-handed operation
- Ergonomic shape: wide chamfers allow a comfortable forward grip behind the scope



- Deep cutout: compatible with rifles featuring large forends in front of the magazine well (e.g., AI, Surgeon, Cadex, POF-USA)
- Integrated QD sling swivel sockets: add sling-mounting options to improve rifle stability

Gen2 upgrades:

- Enhanced surface texture for improved grip and reduced slippage
- Removable ARCA clamp
- Enlarged side cutouts for improved hand placement
- New chamfered edges along the outer contour

| | |
|----------------|----------------|
| Code | 570084 |
| Index | 46951 |
| Material | Aluminum alloy |
| Dimensions, cm | 18.5 × 15.5 |
| Mounting base | ARCA Swiss |
| Weight, g | 363 |

Automatic Basic Hunter Suppressor, Cal. .30

Basic Hunter is a high-performance suppressor from the Ukrainian brand Automatic, designed for use with bolt-action rifles chambered in .30 caliber (7.62 mm).

The suppressor mounts via a 5/8"-24 threaded barrel and effectively reduces sound signature, muzzle flash, and felt recoil.

The non-serviceable body is made from heat-resistant aluminum alloy, ensuring durability and reliability during intensive use.

Weighing just 310 g, it has minimal impact on the rifle's balance, making it comfortable to carry during extended outings.

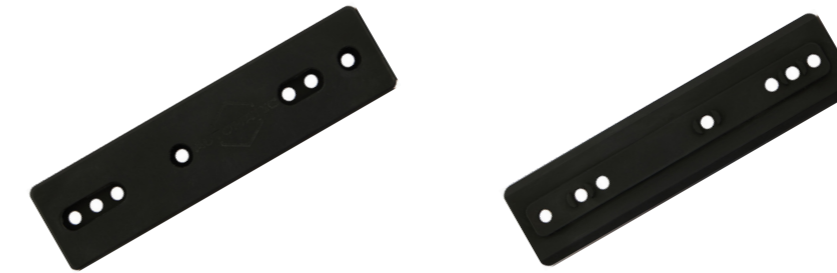
Optimized for single shots and short strings of fire, the Basic Hunter delivers excellent performance and longevity – making it a practical choice for hunters.



| | |
|-------------------------|---|
| Code | 570108 |
| Index | 48936 |
| Device type | Sound moderator |
| Caliber group | 7.62 mm (.30) |
| Muzzle thread | 5/8"-24, M15×1, etc. |
| Material | Aluminum Alloy, stainless steel |
| Acoustic efficiency, dB | 25 - 27 |
| Dimensions, cm | 1.5 × 3.9 |
| Weight, g | 310 |
| Additional Information | Hardcoat anodizing MIL-A-8625 Type III, Class 1 & Class 2 |

Automatic ARCA Rail Adapter, Short 150 mm, Gen 2.3

ARCA rail adapter for the Automatic ACR Gen 2.3 chassis allows mounting the rifle on a tripod, which is especially convenient for precision shooting from a standing position when other shooting stances are not possible.



| | |
|---------------|----------------|
| Code | 570097 |
| Index | 48023 |
| Material | Aluminum alloy |
| Length, mm | 150 |
| Seat | ARCA Rail |
| Mounting base | ARCA Swiss |
| Weight, g | 95 |

Automatic ARCA Rail Adapter

ARCA rail adapter for the Automatic ACR Gen 2 chassis allows mounting the rifle on a tripod, which is especially convenient for precision shooting from a standing position when other shooting stances are not possible.



| | |
|---------------|----------------|
| Code | 570039 |
| Index | 46941 |
| Material | Aluminum alloy |
| Length, mm | 280 |
| Seat | ARCA Rail |
| Mounting base | ARCA Swiss |
| Weight, g | 173 |

Automatic NV/Thermal Mount Gen 3.0, 20 MOA

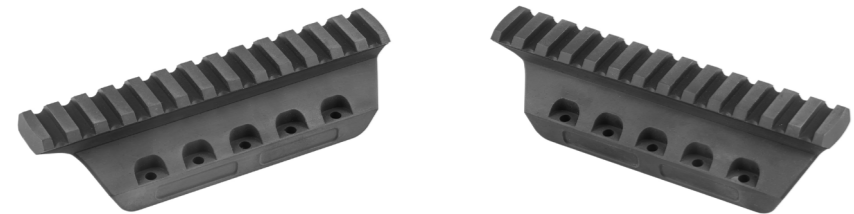
Automatic NV/Thermal Mount Gen3 is a Picatinny interface mount for clip-on night vision and thermal devices. It is made from high-strength 7075-T6 aluminum alloy with Mil-A-8625 Class 1 anodizing. Designed for screw fixation on the dedicated interface of the Gen3 Automatic ARC SA/LA chassis. Mounting screws for attachment to the chassis are included. Not compatible with previous generations of Automatic ARC.



| | |
|------------------------|--------------------|
| Code | 570098 |
| Index | 48576 |
| Mounts | Rails and adapters |
| Fixation on the weapon | Fixed |
| Seat | Picatinny |
| Base Height (BH) | 30 |
| Angle Tilt, MOA | 20 |
| Length, mm | 150 |
| Material | Aluminum alloy |
| Weight, g | 100 |

Automatic NV/Thermal Mount Gen 2

Automatic NV/Thermal Mount Gen2 is a Picatinny interface mount for clip-on night vision and thermal devices. Made from high-strength 7075-T6 aluminum alloy with Mil-A-8625 Class 1 anodizing. Designed to be attached via screws to the dedicated mounting interface of Automatic ARC Gen2 chassis across all weapon platforms (not compatible with Gen1 ARC). Mounting screws are included.



| | |
|------------------------|--------------------|
| Code | 570075 |
| Index | 46737 |
| Mounts | Rails and adapters |
| Fixation on the weapon | Fixed |
| Seat | Picatinny |
| Base Height (BH) | 30 |
| Angle Tilt, MOA | 0 |
| Length, mm | 135 |
| Material | Aluminum alloy |
| Weight, g | 125 |

Automatic Bag Raider Gen 2.3 Buttstock Support

Automatic Gen2 Bag Rider is designed for installation on the buttstock of Automatic ARC Gen2.x chassis. It enables linear recoil tracking of the rifle along a rear shooting support. Mounting screws are included. Not compatible with Automatic ARC Gen1.



| | |
|------------|---------|
| Code | 570099 |
| Index | 48591 |
| Material | Polymer |
| Length, mm | 140 |
| Weight, g | 40 |

Automatic Cheek Riser Gen 2.3

Cheek Rest is designed to replace the standard cheek rest on the Automatic ARC Gen2.x chassis. It improves aiming comfort and enhances cheek weld consistency. Not compatible with Automatic ARC Gen1.



| | |
|------------|---------|
| Code | 570101 |
| Index | 48592 |
| Material | Polymer |
| Length, mm | 140 |
| Weight, g | 70 |



Automatic Magazine Base Plate for Glock 17/19/26/34/45, Black

The Automatic base pad is designed to replace the factory magazine floor plate on Glock models 17, 19, 26, 34, and 45 across all generations. It installs without the need to replace the original spring. The base pad increases magazine capacity by 4 rounds (or by 3 rounds for Glock 19/26 magazines). A Glock 17 pistol with this extended magazine fits within the IPSC Standard Division box. This accessory is useful not only for pistol owners but also for users of pistol-caliber carbines. Made from 7075-T6 aluminum and finished with MIL-A-8625 Type III hard anodizing.



| | |
|---------------|--|
| Code | 570091 |
| EAN-13 | 2200057009102 |
| Handgun Model | Glock-17, Glock-19, Glock-26, Glock-34, Glock-45 |
| Material | Aluminum alloy |

Automatic Magazine Base Plate for Glock 43X/48

Automatic base pad for Glock 43X/48 magazines. Designed to replace the factory floor plate without the need to change the original spring. Increases the standard magazine capacity by 2 rounds. Made from 7075-T6 aluminum with MIL-A-8625 hard anodized finish.



| | |
|---------------|---------------------|
| Code | 570095 |
| EAN-13 | 2257009500002 |
| Handgun Model | Glock-48, Glock-43X |
| Material | Aluminum alloy |



Project for "Come Back Alive" Charity Foundation: 100 sets of Cadex .375 CT rifles in Automatic chassis

IBIS LLC

20, Stepana Bandery Ave.
Kyiv 04073, UKRAINE
+380 (44) 529-95-22

automatic.plus